

AXOR Citterio E

Single lever basin mixer for concealed installation wall-mounted with pin handle, spout 221 mm and escutcheons



Finish: **Chrome** Article Number: **36106000**

product features

- consists of: single lever basin mixer for concealed installation wall-mounted, waste set
- projection: 221 mm
- handle variant: pin handle
- spray type: laminar spray
- maximum flow rate at 3 bar: 5 l/min
- ceramic cartridge
- suitable for continuous flow water heaters
- non-closing waste set
- connection type: basic set
- handle can be positioned on the right or left, depending on the basic set installation
- EU taxonomy: max. 6 l/min - Substantial Contribution (SC) possible

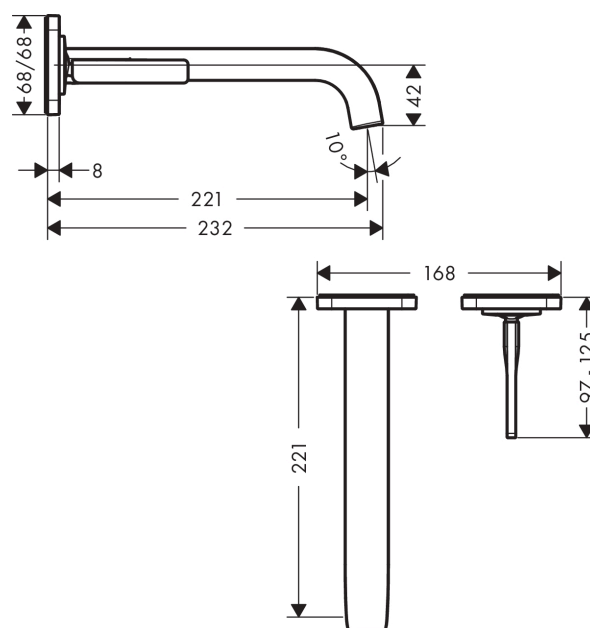
Technology



Product image



Scale drawing



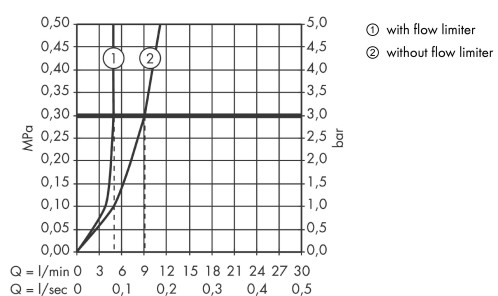
AXOR Citterio E

Single lever basin mixer for concealed installation wall-mounted with pin handle, spout 221 mm and escutcheons



Finish: **Chrome** Article Number: **36106000**

Flowchart



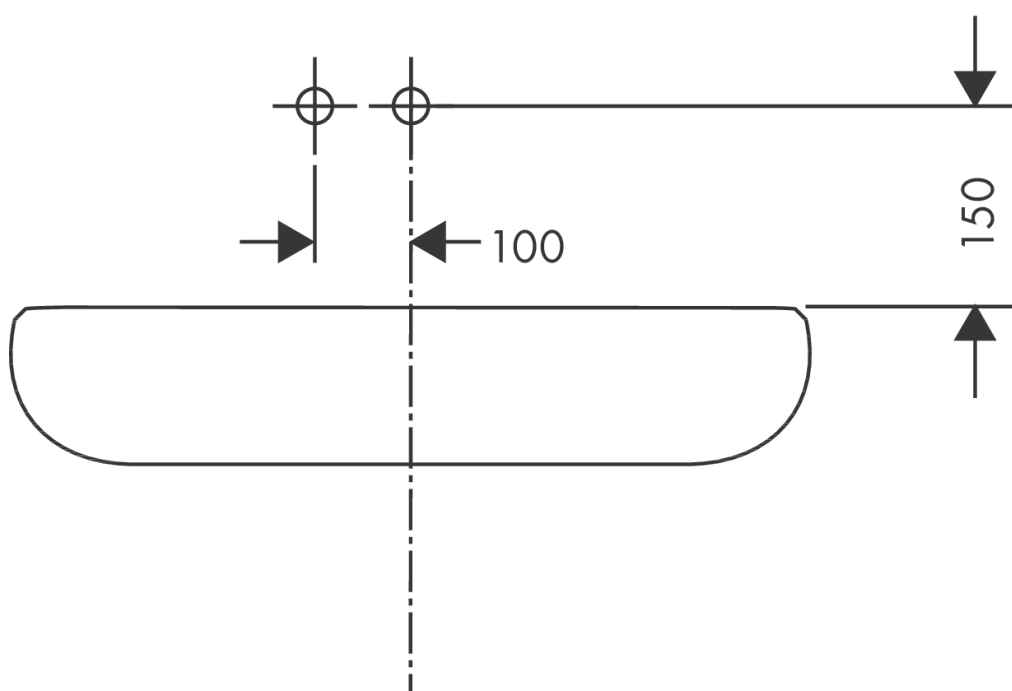
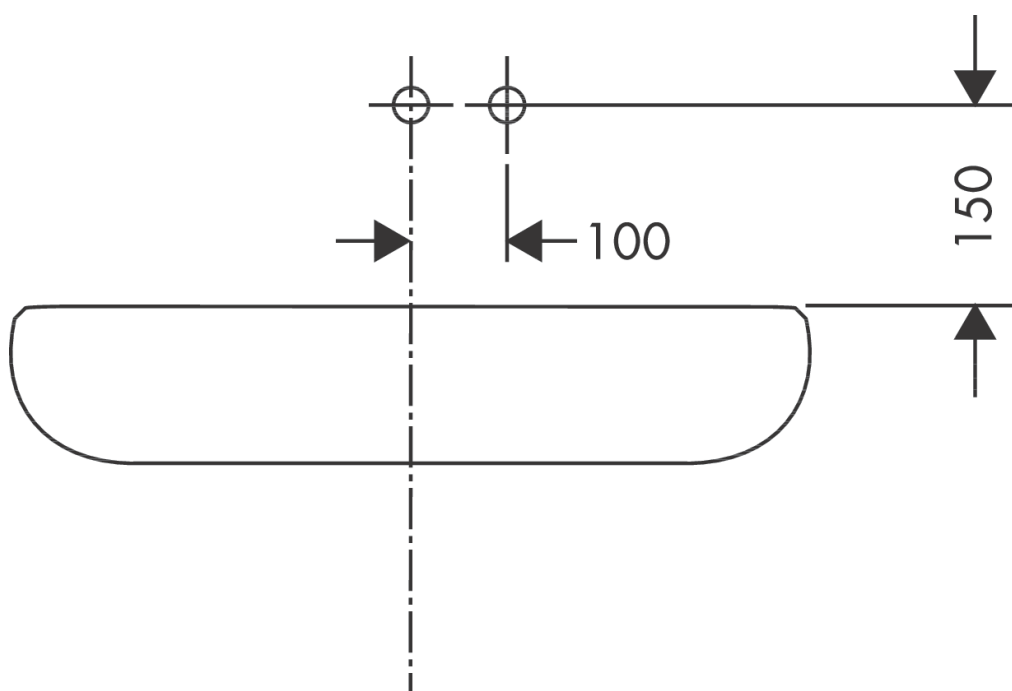
AXOR Citterio E

Single lever basin mixer for concealed installation wall-mounted with pin handle, spout 221 mm and escutcheons



Finish: **Chrome** Article Number: **36106000**

Installation examples



AXOR Citterio E

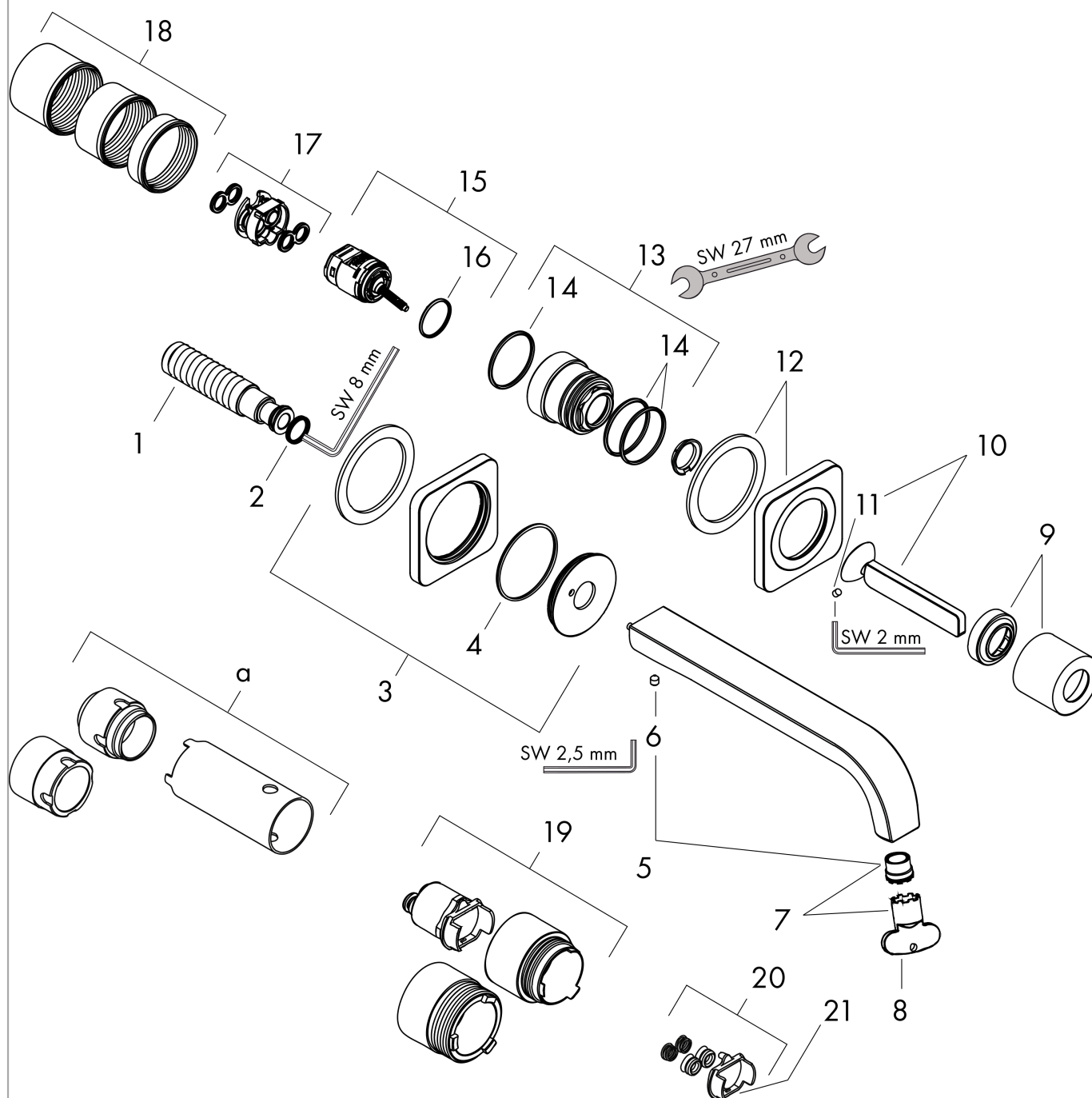
Single lever basin mixer for concealed installation wall-mounted with pin handle, spout 221 mm and escutcheons



Finish: **Chrome** Article Number: **36106000**

Exploded Drawing

Year of production: >12/14



AXOR Citterio E

Single lever basin mixer for concealed installation wall-mounted with pin handle, spout 221 mm and escutcheons



Finish: **Chrome** Article Number: **36106000**

Spare part list

Year of production: >12/14

Pos.		Article Number	PC	PU
1	connecting thread G½	95626000	10	1
2	O-ring 13x2	98128000	1	1
3	escutcheon for spout	92337000	16	1
4	O-ring 47x2	98392000	1	1
5	spout 220 mm	92336000	19	1
6	hollow set screw M5x6	94810000	2	1
7	aerator laminar M16,5x1 (5 l/min)	95382000	9	1
8	special tool	98987000	3	1
9	flange	95776000	10	1
10	handle	92335000	16	1
11	hollow set screw M4x6	97767000	1	1
12	escutcheon for handle	92334000	16	1
13	nut	95777000	12	1
14	O-ring 34x2	98383000	2	1
15	cartridge, assy	96783000	13	1
16	O-ring 21,95x1,78	95169000	1	1
17	adapter for cartridge	95644000	5	1
18	fixing set	97971000	9	1
19	extension set 25 mm for 13622180	31971000	99	1
20	conversion kit	95643000	9	1
21	adapter for cartridge	97280000	2	1
a	extension set for 38111180	38982000	16	1
b	base body	13622180	99	1
c	waste	50001000	99	1
d	adapter for exchanged connections	93561000	18	1
e	Grease	90920000	5	1