

AXOR Starck

Porter unit 120/120 with baton hand shower 2jet and shower hose

Finish: **Chrome** Article Number: **12626000**



product features

- consists of: porter unit, baton hand shower, shower holder, shower hose
- shower head size: 68 x 24 mm
- integrated support function
- spray type: Rain, MonoRain
- maximum flow rate at 3 bar: 16,2 l/min
- minimum flow pressure: 1 bar
- operating pressure: min. 1 bar/max. 10 bar
- for shower hoses with conical or cylindrical nut on both sides
- with non-return valve
- wall mounting: screw fastening
- rinseable screen seal
- in a joined installation (10 mm distance), the basic set no.28486180 must be used
- in a joined installation (10 mm distance) we recommend for perfect handling only the horizontal installation
- in a freely-arranged installation (distance greater than 10 mm), no basic set is required

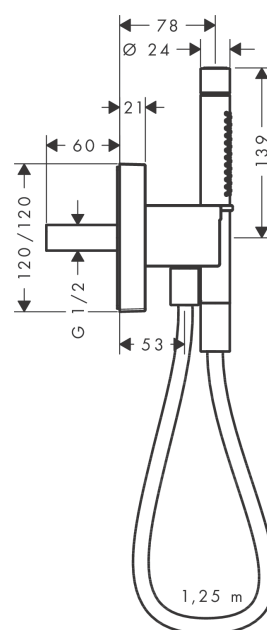
AXOR Starck
Porter unit 120/120 with baton hand shower 2jet and shower hose
 Finish: **Chrome** Article Number: **12626000**



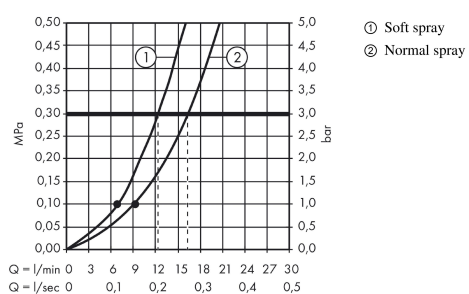
Product image



Scale drawing



Flowchart



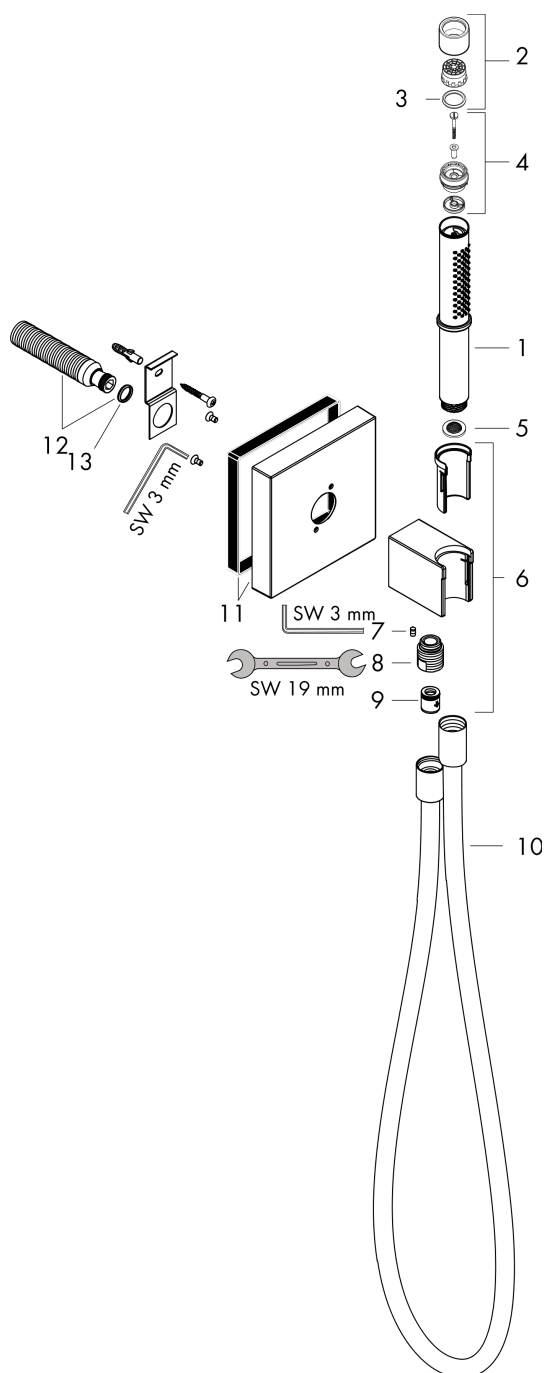
The consumption was measured in combination with the appropriate fittings (thermostat/mixer/in-wall valve) to reflect actual application in practice.

AXOR Starck
Porter unit 120/120 with baton hand shower 2jet and shower hose
 Finish: **Chrome** Article Number: **12626000**



Exploded Drawing

Year of production: >11/12



AXOR Starck
Porter unit 120/120 with baton hand shower 2jet and shower hose
 Finish: **Chrome** Article Number: **12626000**



Spare part list

Year of production: >11/12

Pos.		Article Number	PC	PU
1	handshower	95390000	18	1
2	spray former	95411000	9	1
3	O-Ring 14x2,5	98189000	1	1
4	selector assy	95511000	4	1
5	filter packing	94246000	1	1
6	shower holder, assy	98358000	15	1
7	hollow set screw M4x16	97663000	1	1
8	Hose Connection	96044000	5	1
9	set of non return valves DW 15	94074000	5	1
10	shower hose 1,25 m	28282000	99	1
11	escutcheon	98359000	16	1
12	connecting thread G½	98933000	11	1
13	O-ring 11x2	98127000	1	1
a	concealed item	28486180	99	1
b	flow-restrictor-set	92019000	2	1