

AXOR Montreux

3-hole basin mixer for concealed installation wall-mounted with spout 165 - 225 mm and cross handles

Finish: **Chrome** Article Number: **16532000**



product features

- consists of: 3-hole basin mixer for concealed installation wall-mounted, waste set
- projection: 165 - 225 mm
- handle variant: cross handle
- spray type: normal spray
- maximum flow rate at 3 bar: 5 l/min
- ceramic valves hot/cold 90°
- suitable for continuous flow water heaters
- non-closing waste set
- connection type: basic set
- connection dimension: DN15
- EU taxonomy: max. 6 l/min - Substantial Contribution (SC) possible

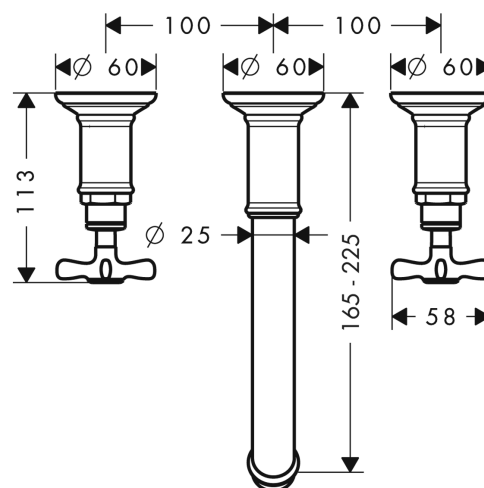
Technology



Product image



Scale drawing



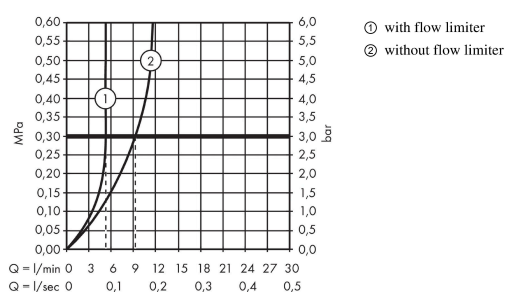
AXOR Montreux

3-hole basin mixer for concealed installation wall-mounted with spout 165 - 225 mm and cross handles

Finish: **Chrome** Article Number: **16532000**



Flowchart



AXOR Montreux

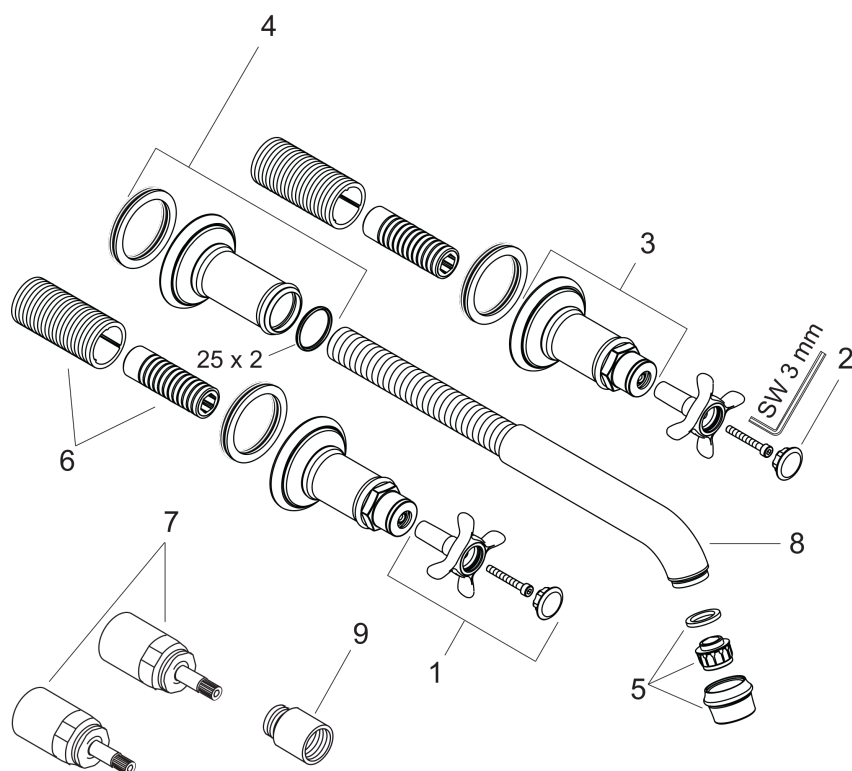
3-hole basin mixer for concealed installation wall-mounted with spout 165 - 225 mm and cross handles

Finish: **Chrome** Article Number: **16532000**



Exploded Drawing

Year of production: >01/09



AXOR Montreux

3-hole basin mixer for concealed installation wall-mounted with spout 165 - 225 mm and cross handles

Finish: **Chrome** Article Number: **16532000**



Spare part list

Year of production: >01/09

Pos.		Article Number	PC	PU
1	handle	16291000	13	1
2	set of screw covers, cold / hot water / neutral	97987000	11	1
3	escutcheon for handle	98578000	16	1
4	escutcheon for spout	98576000	15	1
5	aerator M22x1 (5 l/min + 25 l/min)	95381000	11	1
6	fixing set	96392000	8	1
7	extension 25 mm	96259000	12	1
8	spout cpl.	98574000	17	1
9	extension 25 mm	95413000	12	1
a	waste	50001000	99	1
b	base body	10303180	99	1
c	mounting-set V+B	96142000	99	1