

AXOR ShowerSolutions
Overhead shower 350 1jet with ceiling connection
 Finish: **Chrome** Article Number: **26035000**



product features

- consists of: overhead shower, ceiling connector
- shower head size: 350 mm
- spray type: PowderRain
- ball-joint: overhead shower angle adjustable
- material spray disc: metal
- brass ceiling connector
- ceiling connection length: 100 mm
- maximum flow rate at 3 bar: 26 l/min
- flow rate PowderRain spray (at 3 bar): 26 l/min
- minimum flow pressure: 1 bar
- overhead shower removable for cleaning
- installation: ceiling
- connection thread G 1/2
- connection dimension: DN15
- suitable for continuous flow water heaters

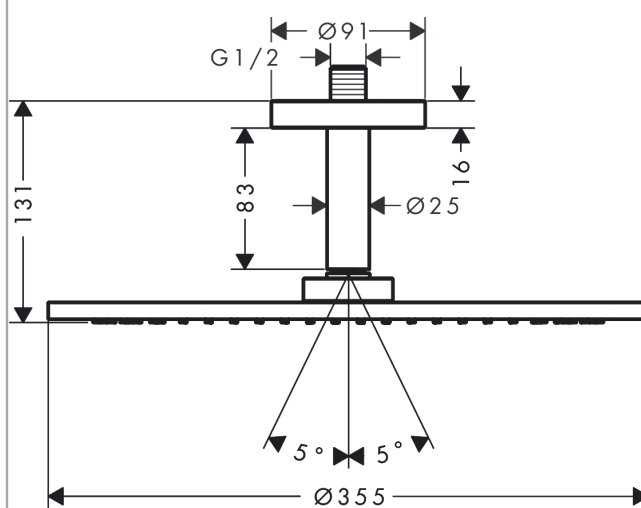
Technology



Product image



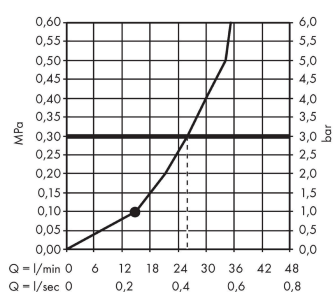
Scale drawing



AXOR ShowerSolutions
Overhead shower 350 1jet with ceiling connection
 Finish: **Chrome** Article Number: **26035000**



Flowchart



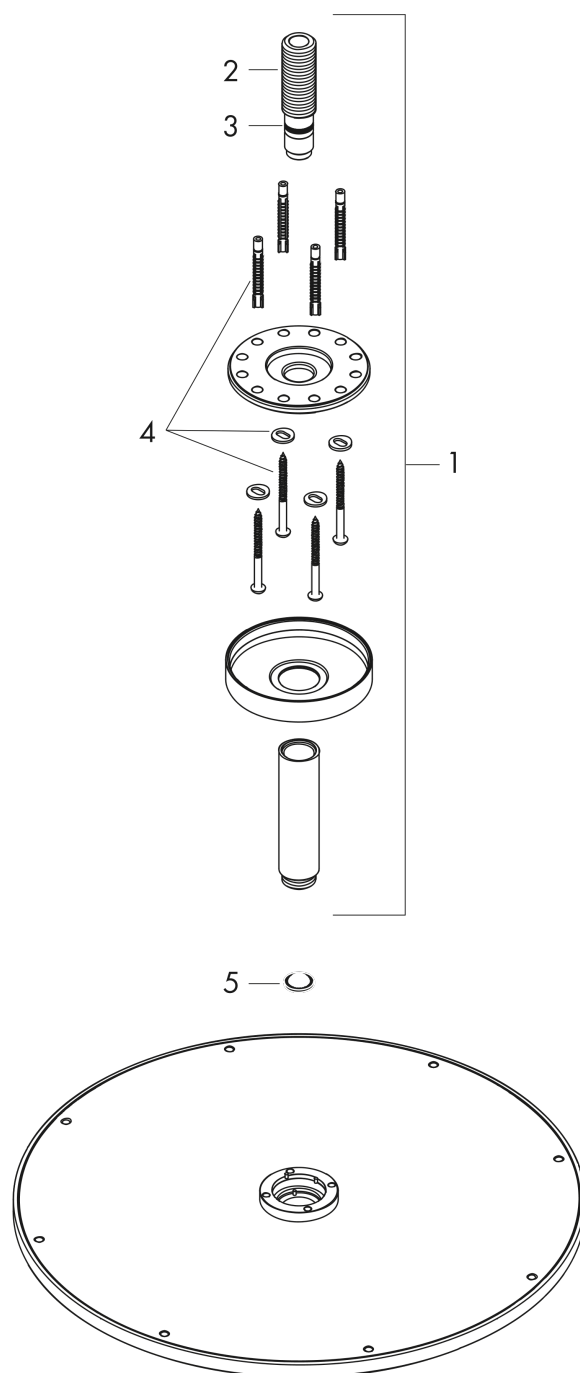
The consumption was measured in combination with the appropriate fittings (thermostat/mixer/in-wall valve) to reflect actual application in practice.

AXOR ShowerSolutions
Overhead shower 350 1jet with ceiling connection
 Finish: **Chrome** Article Number: **26035000**



Exploded Drawing

Year of production: >07/17



AXOR ShowerSolutions
Overhead shower 350 1jet with ceiling connection
 Finish: **Chrome** Article Number: **26035000**



Spare part list

Year of production: >07/17

Pos.		Article Number	PC	PU
1	shower arm	26432000	99	1
2	connecting thread	93418000	10	1
3	O-ring 14x2	98129000	1	1
4	mounting set	96179000	4	1
5	filter packing	94246000	1	1