

## AXOR One

**Single lever basin mixer for concealed installation wall-mounted with lever handle and spout**  
**220 mm**

Finish: **Chrome** Article Number: **48120000**



### product features

- consists of: single lever basin mixer for concealed installation wall-mounted, waste set
- projection: 220 mm
- handle variant: lever handle
- spray type: normal spray
- maximum flow rate at 3 bar: 5 l/min
- ceramic cartridge
- temperature limitation adjustable
- suitable for continuous flow water heaters
- non-closing waste set
- connection type: basic set
- connection dimension: DN15
- handle can be positioned on the right or left, depending on the basic set installation
- EU taxonomy: max. 6 l/min - Substantial Contribution (SC) possible

### Technology



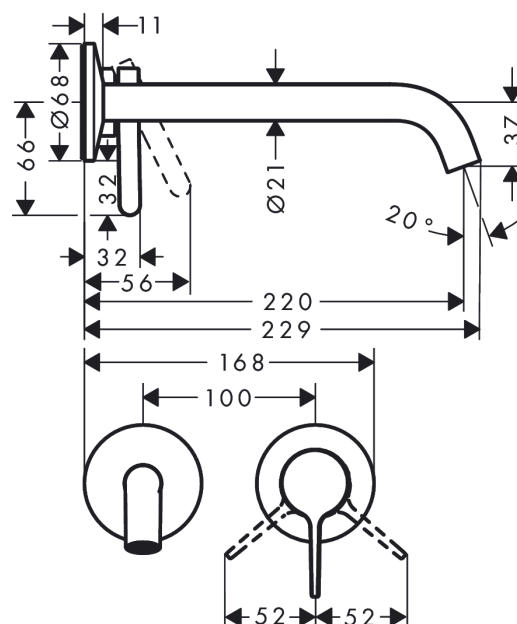
### Design awards



### Product image



### Scale drawing



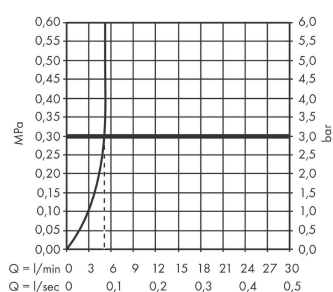
## AXOR One

**Single lever basin mixer for concealed installation wall-mounted with lever handle and spout**  
**220 mm**

Finish: **Chrome**      Article Number: **48120000**



### Flowchart



## AXOR One

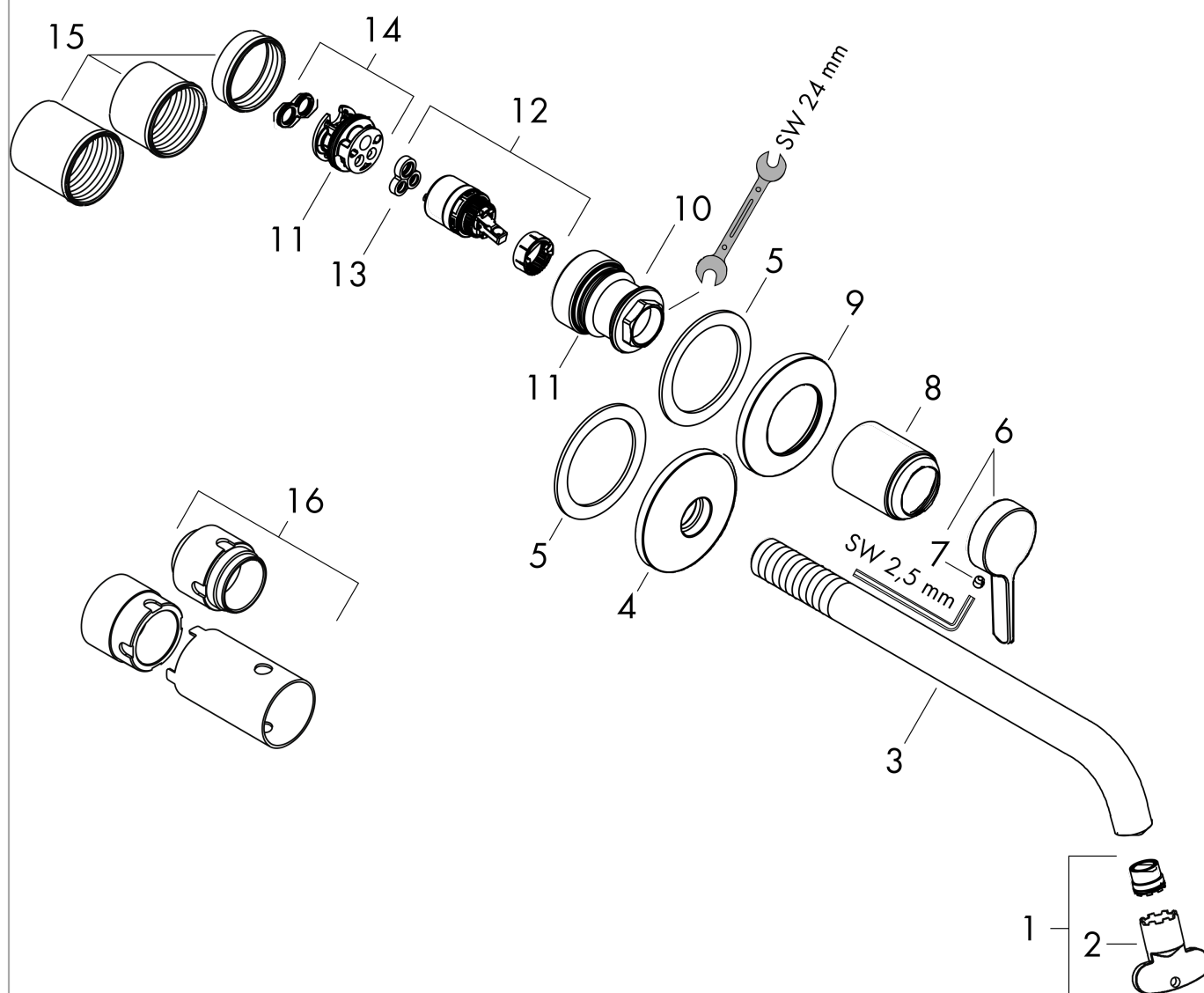
Single lever basin mixer for concealed installation wall-mounted with lever handle and spout  
220 mm

Finish: **Chrome** Article Number: **48120000**



## Exploded Drawing

Year of production: >06/21



## AXOR One

**Single lever basin mixer for concealed installation wall-mounted with lever handle and spout  
220 mm**

Finish: **Chrome** Article Number: **48120000**



## Spare part list

Year of production: >06/21

Pos.		Article Number	PC	PU
1	aerator cpl.	93118000	7	1
2	special tool	98987000	3	1
3	spout 220 mm	94346000	13	1
4	escutcheon for spout	94348000	15	1
5	washer	97600000	4	1
6	handle	94347000	10	1
7	hollow set screw M5x5	98446000	1	1
8	sleeve	93989000	8	1
9	escutcheon for handle	94349000	14	1
10	nut	94752000	8	1
11	O-ring 26x2	98147000	1	1
12	cartridge, assy	93760000	13	1
13	seal	93383000	4	1
14	adapter for cartridge	95634000	4	1
15	fixing set	97971000	9	1
16	extension 25 mm	13586000	99	1
a	pop up waste	51301000	99	1
b	adapter for exchanged connections	93819000	16	1